

## Top Stories This Week

- Reliance Power Signs memorandum of understanding (MoU) to acquire 100 percent of Jaiprakash Power 's 1800 MW hydro power portfolio.
- Gail inks MoU with Japan's Sumitomo for opportunities in LNG.
- Adani group planning to raise Rs 10000 crore via stake sale in group company: Adani Enterprises, Adani Power and Adani Ports and SEZ: ET
- Top banking sources confirm IDBI has been asked to merge United Bank into itself.
- Government aims USD 300 billion textile, apparel exports by FY25.
- Steel makers may raise prices by Rs 500-1,000/tonne next month: PTI
- Adani in talks to acquire Indianbulls Amravati power plant, deal size seen between Rs 7000-9000 crore: TOI
- L&T Q1: -Consolidated Net Profit At Rs 967 Crore Versus Rs 458.6 Crore (YoY)
- Bharti Airtel Q1 consolidated Net Profit At Rs 1,108.5 Crore Versus Rs 961.6 Crore (QoQ).

## Weekly Indices Change

Index	Close	P. Close	Chg. (%)
SENSEX	25480	26126	-2.47
NIFTY	7602	7785	-2.35
MIDCAP	9114.33	9178	-0.69
SMLCAP	9890.97	10037	-1.45
METAL	12815.54	13200	-2.91
OIL&GAS	10517.71	10844	-3.01
AUTO	15329.57	15609	-1.79
TECK	5428.62	5479	-0.92
BANDEX	17328.98	17543	-1.22
IT	9594.6	9789	-1.99
FMCG	7101.33	7158	-0.79
HC	12146.1	12136	0.08
PSU	7895.9	8102	-2.54
CD	8277.06	8468	-2.25
POWER	2093.66	2153	-2.76
CG	14373.36	15604	-7.89
REALTY	1873.58	1925	-2.67

## Global Indices

DOW	16493	16960	-2.75
NASDAQ	4352	4449	-2.18
FTSE	6679	6791	-1.65
NIKKEI	15523	15457	0.43
HANGSENG	24532	24216	1.30

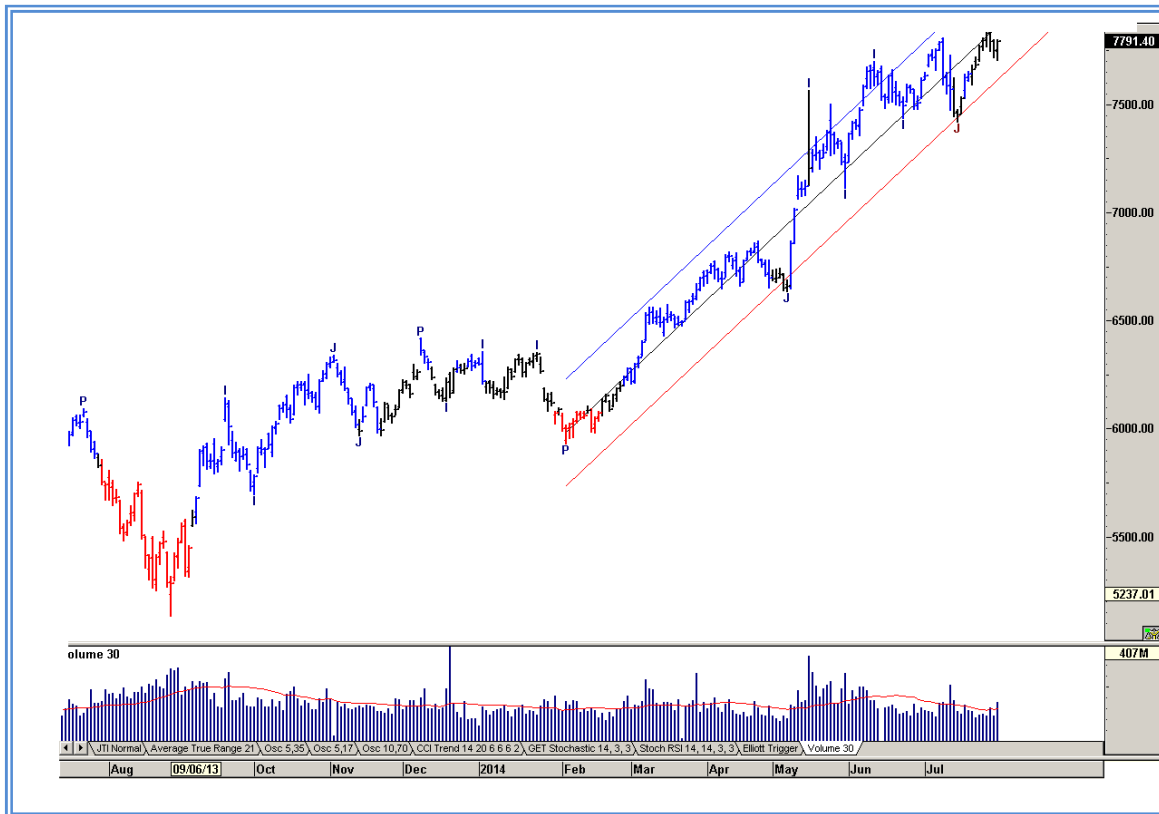
## Top Gainers Weekly

Scrip	Price	% Chg
INDOCO REMEDIES	244.20	27.97
IFB INDUSTRIES	200.90	25.48
ATUL AUTO	651.80	17.34
JINDAL POLY	177.95	15.63
GMR INFRA	28.70	13.89

## Top Losers Weekly

Scrip	Price	% Chg
BAJAJ ELECTRICALS	277.30	17.67
DELTA LEASING AND FIN	93.10	13.84
ABG INFRALOGISTICS	77.80	12.78
ALKALI METALS	20.80	9.57
DEEPAK FERTILIZERS	160.70	9.44

## Nifty Corner



<b>Support &amp; Resistance</b>						
S3	S2	S1	Nifty	R1	R2	R3
7400	7450	7550	7602	7660	7720	7800
<b>Moving Averages</b>						
20DMA		50DMA		100DMA		200DMA
7686		7580		7174		6688

## Market Commentary

Weakness in global stocks weighed on the domestic bourses in the week ended Friday, 1 August 2014. The barometer index, the S&P BSE Sensex, fell below the psychological 26,000 mark during the week to settle at over two week low on Friday, 1 August 2014. The 50-unit CNX Nifty also finished at its lowest level in over two weeks on Friday, 1 August 2014. The market logged decline in three out of four trading sessions in the week just gone by. For the next week Nifty likely to trade in the range between 7720 – 7800 in the upper side and 7550 – 7400 in the lower side.

### Stocks at 52 wk High

Scrip	Cmp
ATUL AUTO	652.55
BHARTI AIRTEL	380.05
COX & KINGS	261.40
GLENMARK	679.80
HUL	693.55

### Stocks at 52 wk Low

Scrip	Cmp
DELTA MAGNETS	22.55
DR DATSON LABS	11.45
LAKSHMI ENERGY	17.00
ZYLOG SYSTEMS	9.30
PRITHVI INFO	5.60

### FII Activity

Date	Figures in crore
28/07	113.02
29/07	-
30/07	-276.01
31/07	-1510.29
01/08	-1072.96
NET	-2746.24

### DII Activity

Date	Figures in crore
28/07	293.10
29/07	-
30/07	890.20
31/07	1454.10
01/08	1074.7
NET	3712.10

### Weekly Stock Idea

Scrip	B/S	Cmp	Tgt
HINDUNILVR	B	693	715
HEROMOTOCO	B	2596	2650
ICICIBANK	B	1475	1510
ASHOKLEY	B	34	38
DABUR	B	202	215

Buy on dips & Sell on rise with Stop-loss of 3%

### Volume Breakout Stocks

Scrip	Cmp
ASIAN HOTEL	110.00
THOMAS COOK	142.10
MT EDUCARE	134.95
BIRLA CORP	405.55
UNION BANK	196.70

### Week Ahead

#### **MAJOR RESULTS MEETING THIS WEEK:**

**04 AUG:** TBZ, TATACOMM, PUNJLLOYD, POWERGRID, APTECHT, IGL, ORIENTBANK, MARICO

**05 AUG:** SINTEX, TATACHEM, NHPC, HEROMOTOCO, BATAINDIA, EIHOTEL

**06 AUG:** WELETRP, JINDALSTEL, TIDEWATER, NESCO, MTEDUCARE, GATI, IDBI, GUJRATGAS, APOLLOTYRE, ADANIPOWER, ADANI PORTS

**07 AUG:** ZEEMEDIA, VTL, TALWALKARS, JUBLFOOD, IVC, INDIACEM, FORTIS, AUROPHARMA, BOMDYEING,

**08 AUG:** WONDERLA, PFC, SBIN, SUNTV, IL&FSENGG, M&M, KESORAMIND, JSL, NDTV, GAMMNINFRA, BIRLACORPN, BAJAJHIND, ASIANHOTNR, CORPBANK

**VISIT US AT: [WWW.INDIRATRADE.COM](http://WWW.INDIRATRADE.COM)**

#### **Disclaimer**

This report is for private circulation within the Indira Group. This report is strictly confidential and for information of the selected recipient only and may not be altered in any way, transmitted to, copied or distributed, in part or in whole, to any other person or to the media or reproduced in any form. This report should not be construed as an offer or solicitation to buy or sell any securities or any interest in securities. It does not constitute a personal recommendation or take into account the particular investment objectives, financial situations, or any such factor. The information, opinions estimates and forecasts contained here have been obtained from, or are based upon, sources we believe to be reliable, but no representation of warranty, express or implied, is made by us to their accuracy or completeness. Opinions expressed are our current opinions as of the date appearing on this material only and are subject to change without notice.